

HIGHLIGHTS OF PRESCRIBING INFORMATION

These highlights do not include all the information needed to use NUCYNTA® ER safely and effectively. See full prescribing information for NUCYNTA® ER

NUCYNTA® ER (tapentadol) extended-release tablets for oral use C-II
Initial U.S. Approval: 2008

WARNING: ADDICTION, ABUSE, AND MISUSE; LIFE-THREATENING RESPIRATORY DEPRESSION; ACCIDENTAL INGESTION; NEONATAL OPIOID WITHDRAWAL SYNDROME; INTERACTION WITH ALCOHOL and RISKS FROM CONCOMITANT USE WITH BENZODIAZEPINES OR OTHER CNS DEPRESSANTS

See full prescribing information for complete boxed warning.

- NUCYNTA ER exposes users to risks of addiction, abuse, and misuse, which can lead to overdose and death. Assess each patient's risk before prescribing, and monitor regularly for development of these behaviors or conditions. (5.1)
- Serious, life-threatening, or fatal respiratory depression may occur. Monitor closely, especially upon initiation or following a dose increase. Instruct patients to swallow NUCYNTA ER tablets whole to avoid exposure to a potentially fatal dose of tapentadol. (5.2)
- Accidental ingestion of NUCYNTA ER, especially in children, can result in fatal overdose of tapentadol. (5.2)
- Prolonged use of NUCYNTA ER during pregnancy can result in neonatal opioid withdrawal syndrome, which may be life-threatening if not recognized and treated. If opioid use is required for a prolonged period in a pregnant woman, advise the patient of the risk of neonatal opioid withdrawal syndrome and ensure that appropriate treatment will be available (5.3).
- Instruct patients not to consume alcohol or any products containing alcohol while taking NUCYNTA ER because co-ingestion can result in fatal plasma tapentadol levels. (5.4)
- Concomitant use of opioids with benzodiazepines or other central nervous system (CNS) depressants, including alcohol, may result in profound sedation, respiratory depression, coma, and death. Reserve concomitant prescribing for use in patients for whom alternative treatment options are inadequate; limit dosages and durations to the minimum required; and follow patients for signs and symptoms of respiratory depression and sedation. (5.4), (7).

RECENT MAJOR CHANGES

Boxed Warning	12/2016
Warnings and Precautions (5)	12/2016

INDICATIONS AND USAGE

NUCYNTA ER is an opioid agonist indicated for the management of:

- pain severe enough to require daily, around-the-clock, long-term opioid treatment and for which alternative treatment options are inadequate (1)
- neuropathic pain associated with diabetic peripheral neuropathy (DPN) in adults severe enough to require daily, around-the-clock, long-term opioid treatment and for which alternative treatment options are inadequate. (1)

Limitations of Use

- Because of the risks of addiction, abuse, and misuse with opioids, even at recommended doses, and because of the greater risks of overdose and death with extended-release opioid formulations, reserve NUCYNTA ER for use in patients for whom alternative treatment options (e.g., non-opioid analgesics or immediate-release opioids) are ineffective, not tolerated, or would be otherwise inadequate to provide sufficient management of pain.
- NUCYNTA ER is not indicated as an as-needed (prn) analgesic. (1)

DOSAGE AND ADMINISTRATION

- To be prescribed only by healthcare providers knowledgeable in use of potent opioids for management of chronic pain. (2.1)
- Use the lowest effective dosage for the shortest duration consistent with individual patient treatment goals. (2.1)
- Individualize dosing based on the severity of pain, patient response, prior analgesic experience, and risk factors for addiction, abuse, and misuse. (2.1)
- Instruct patients to swallow NUCYNTA ER tablets intact, and not to cut, break, chew, crush, or dissolve the tablets (risk of potentially fatal overdose). (2.1, 5.1)
- Instruct patients to take tablets one at a time, with enough water to ensure complete swallowing immediately after placing in mouth. (2.1)
- For opioid-naïve and opioid non-tolerant patients, initiate treatment with 50 mg tablet orally twice daily (approximately every 12 hours). See full prescribing information for instructions on conversion, titration, and maintenance of therapy. (2.2, 2.3)

- Titrate patients with dose increases of 50 mg no more than twice daily every three days. (2.3)
- Maximum daily dose is 500 mg per day. (2.1)
- Moderate Hepatic Impairment: Initiate treatment with 50 mg NUCYNTA ER no more than every 24 hours. Do not exceed 100 mg per day. Monitor closely for respiratory and central nervous system depression (2.4)
- Do not abruptly discontinue NUCYNTA ER in a physically-dependent patient. (2.5)

DOSAGE FORMS AND STRENGTHS

Extended-release tablets: 50 mg, 100 mg, 150 mg, 200 mg, 250 mg (3)

CONTRAINDICATIONS

- Significant respiratory depression (4)
- Acute or severe bronchial asthma (4)
- Known or suspected paralytic ileus (4)
- Hypersensitivity to tapentadol or to any other ingredients of the product (4)
- Concurrent use of monoamine oxidase inhibitors (MAOIs) or use of MAOIs within the last 14 days. (4)

WARNINGS AND PRECAUTIONS

- Risk of Life-Threatening Respiratory Depression in Patients with Chronic Pulmonary Disease or in Elderly, Cachectic, or Debilitated Patients: Monitor closely, particularly during initiation and titration. (5.1)
- **Serotonin Syndrome:** Potentially life-threatening condition could result from concomitant serotonergic drug administration. Discontinue NUCYNTA ER if serotonin syndrome is suspected. (5.6)
- **Adrenal Insufficiency:** If diagnosed, treat with physiologic replacement of corticosteroids, and wean patient off of the opioid. (5.7)
- **Severe Hypotension:** Monitor during dosage initiation and titration. Avoid use of NUCYNTA ER in patients with circulatory shock. (5.8)
- **Risks of Use in Patients with Increased Intracranial Pressure, Brain Tumors, Head Injury, or Impaired Consciousness:** Monitor for sedation and respiratory depression. Avoid use of NUCYNTA ER in patients with impaired consciousness or coma. (5.9)

ADVERSE REACTIONS

The most common ($\geq 10\%$) adverse reactions were nausea, constipation, dizziness, headache, and somnolence. (6)

To report SUSPECTED ADVERSE REACTIONS, contact Collegium Pharmaceutical, Inc. at 1-866-458-6389 or FDA at 1-800-FDA-1088 or www.fda.gov/medwatch.

DRUG INTERACTIONS

- **Mixed Agonist/Antagonist and Partial Agonist Opioid Analgesics:** Avoid use with NUCYNTA ER because they may reduce analgesic effect of NUCYNTA ER or precipitate withdrawal symptoms. (5.12, 7)

USE IN SPECIFIC POPULATIONS

- **Pregnancy:** Based on animal data, may cause fetal harm. (8.1)
- **Nursing mothers:** Nursing is not recommended. (8.2)
- **Severe Hepatic or Renal Impairment:** Use not recommended. (8.6, 8.7)

See 17 for PATIENT COUNSELING INFORMATION and Medication Guide.

Revised: 12/2016

FULL PRESCRIBING INFORMATION:	5.13 Risks of Driving and Operating Machinery
CONTENTS* WARNING: ADDICTION, ABUSE, AND MISUSE; LIFE-THREATENING RESPIRATORY DEPRESSION;	5.14 Risk of Toxicity in Patients with Hepatic Impairment
ACCIDENTAL INGESTION; NEONATAL OPIOID WITHDRAWAL SYNDROME;	5.15 Risk of Toxicity in Patients with Renal Impairment
INTERACTION WITH ALCOHOL and RISKS FROM CONCOMITANT USE WITH BENZODIAZEPINES OR OTHER CNS DEPRESSANTS	
1 INDICATIONS AND USAGE	6 ADVERSE REACTIONS
2 DOSAGE AND ADMINISTRATION	6.1 Clinical Trial Experience
2.1 Important Dosage and Administration Instructions	6.2 Postmarketing Experience
2.2 Initial Dosage	7 DRUG INTERACTIONS
2.3 Titration and Maintenance of Therapy	8 USE IN SPECIFIC POPULATIONS
2.4 Dosage Modification in Patients with Hepatic Impairment	8.1 Pregnancy
2.5 Discontinuation of NUCYNTA ER	8.2 Lactation
3 DOSAGE FORMS AND STRENGTHS	8.3 Females and Males of Reproductive Potential
4 CONTRAINDICATIONS	8.4 Pediatric Use
5 WARNINGS AND PRECAUTIONS	8.5 Geriatric Use
5.1 Addiction, Abuse, and Misuse	8.6 Hepatic Impairment
5.2 Life-Threatening Respiratory Depression	8.7 Renal Impairment
5.3 Neonatal Opioid Withdrawal Syndrome	9 DRUG ABUSE AND DEPENDENCE
5.4 Risk from Concomitant Use with Benzodiazepines or Other CNS Depressants	9.1 Controlled Substance
5.5 Risk of Life-Threatening Respiratory Depression in Patients with Chronic Pulmonary Disease or in Elderly, Cachectic, or Debilitated Patients	9.2 Abuse
5.6 Serotonin Syndrome with Concomitant Use of Serotonergic Drugs	9.3 Dependence
5.7 Adrenal Insufficiency	10 OVERDOSAGE
5.8 Severe Hypotension	10.1 Clinical Presentation
5.9 Risks of Use in Patients with Increased Intracranial Pressure, Brain Tumors, Head Injury, or Impaired Consciousness	10.2 Treatment of Overdose
5.10 Risks of Use in Patients with Gastrointestinal Conditions	11 DESCRIPTION
5.11 Increased Risk of Seizures in Patients with Seizure Disorders	12 CLINICAL PHARMACOLOGY
5.12 Withdrawal	12.1 Mechanism of Action
	12.2 Pharmacodynamics
	12.3 Pharmacokinetics
	13 NONCLINICAL TOXICOLOGY
	13.1 Carcinogenesis, Mutagenesis, Impairment of Fertility
	13.2 Animal Toxicology and/or Pharmacology
	14 CLINICAL STUDIES
	14.1 Clinical Trials Summary
	14.2 Moderate to Severe Chronic Low Back Pain
	14.3 Neuropathic Pain Associated with Diabetic Peripheral Neuropathy
	16 HOW SUPPLIED/STORAGE AND HANDLING
	17 PATIENT COUNSELING INFORMATION
	*Sections or subsections omitted from the full prescribing information are not listed

FULL PRESCRIBING INFORMATION

WARNING: ADDICTION, ABUSE, AND MISUSE; LIFE-THREATENING RESPIRATORY DEPRESSION; ACCIDENTAL INGESTION; NEONATAL OPIOID WITHDRAWAL SYNDROME; INTERACTION WITH ALCOHOL and RISKS FROM CONCOMITANT USE WITH BENZODIAZEPINES OR OTHER CNS DEPRESSANTS

Addiction, Abuse, and Misuse

NUCYNTA ER exposes patients and other users to the risks of opioid addiction, abuse, and misuse, which can lead to overdose and death. Assess each patient's risk prior to prescribing NUCYNTA ER, and monitor all patients regularly for the development of these behaviors and conditions [see *Warnings and Precautions (5.1)*].

Life-threatening Respiratory Depression

Serious, life-threatening, or fatal respiratory depression may occur with use of NUCYNTA ER. Monitor for respiratory depression, especially during initiation of NUCYNTA ER or following a dose increase. Instruct patients to swallow NUCYNTA ER tablets whole; crushing, chewing, or dissolving NUCYNTA ER tablets can cause rapid release and absorption of a potentially fatal dose of tapentadol [see *Warnings and Precautions (5.2)*].

Accidental Ingestion

Accidental ingestion of even one dose of NUCYNTA ER, especially by children, can result in a fatal overdose of tapentadol [see *Warnings and Precautions (5.2)*].

Neonatal Opioid Withdrawal Syndrome

Prolonged use of NUCYNTA ER during pregnancy can result in neonatal opioid withdrawal syndrome, which may be life-threatening if not recognized and treated, and requires management according to protocols developed by neonatology experts. If opioid use is required for a prolonged period in a pregnant woman, advise the patient of the risk of neonatal opioid withdrawal syndrome and ensure that appropriate treatment will be available [see *Warnings and Precautions (5.3)*].

Interaction with Alcohol

Instruct patients not to consume alcoholic beverages or use prescription or non-prescription products that contain alcohol while taking NUCYNTA ER. The co-ingestion of alcohol with NUCYNTA ER may result in increased plasma tapentadol levels and a potentially fatal overdose of tapentadol [see *Warnings and Precautions (5.4)*].

Risks From Concomitant Use With Benzodiazepines Or Other CNS Depressants

Concomitant use of opioids with benzodiazepines or other central nervous system (CNS) depressants, including alcohol, may result in profound sedation, respiratory depression, coma, and death [see *Warnings and Precautions (5.4), Drug Interactions (7)*].

- Reserve concomitant prescribing of NUCYNTA ER and benzodiazepines or other CNS depressants for use in patients for whom alternative treatment options are inadequate.
- Limit dosages and durations to the minimum required.
- Follow patients for signs and symptoms of respiratory depression and sedation.

1 INDICATIONS AND USAGE

NUCYNTA ER (tapentadol) is indicated for the management of:

- pain severe enough to require daily, around-the-clock, long-term opioid treatment and for which alternative treatment options are inadequate.
- neuropathic pain associated with diabetic peripheral neuropathy (DPN) severe enough to require daily, around-the-clock, long-term opioid treatment and for which alternative treatment options are inadequate.

Limitations of Use

- Because of the risks of addiction, abuse, and misuse with opioids, even at recommended doses, and because of the greater risks of overdose and death with extended-release opioid formulations [see *Warnings and Precautions (5.1)*], reserve NUCYNTA ER for use in patients for whom alternative treatment options (e.g., non-opioid analgesics or immediate-release opioids) are ineffective, not tolerated, or would be otherwise inadequate to provide sufficient management of pain.
- NUCYNTA ER is not indicated as an as-needed (prn) analgesic.

2 DOSAGE AND ADMINISTRATION

2.1 Important Dosage and Administration Instructions

NUCYNTA ER should be prescribed only by healthcare professionals who are knowledgeable in the use of potent opioids for the management of chronic pain.

- Use the lowest effective dosage for the shortest duration consistent with individual patient treatment goals [see *Warnings and Precautions (5)*].
- Initiate the dosing regimen for each patient individually, taking into account the patient's severity of pain, patient response, prior analgesic treatment experience, and risk factors for addiction, abuse, and misuse [see *Warnings and Precautions (5.1)*].
- Monitor patients closely for respiratory depression, especially within the first 24-72 hours of initiating therapy and following dosage increases with NUCYNTA ER and adjust the dosage accordingly [see *Warnings and Precautions (5.2)*].

Instruct patients to swallow NUCYNTA ER tablets whole, one tablet at a time, with enough water to ensure complete swallowing immediately after placing in the mouth [see *Patient Counseling Information (17)*]. Crushing, chewing, or dissolving NUCYNTA ER tablets will result in uncontrolled delivery of tapentadol and can lead to overdose or death [see *Warnings and Precautions (5.1)*].

Discontinue all other tapentadol and tramadol products when beginning and while taking NUCYNTA ER [see *Warnings and Precautions (5.6)*]. Although the maximum approved total daily dose of NUCYNTA immediate-release formulation is 600 mg per day, the maximum total daily dose of NUCYNTA ER is 500 mg. Do not exceed a total daily dose of NUCYNTA ER of 500 mg.

2.2 Initial Dosage

Use of NUCYNTA ER as the First Opioid Analgesic (opioid-naïve patients)

Initiate treatment with NUCYNTA ER with the 50 mg tablet orally twice daily (approximately every 12 hours).

Use of NUCYNTA ER in Patients who are not Opioid Tolerant

The starting dose for patients who are not opioid tolerant is NUCYNTA ER 50 mg orally twice daily (approximately every 12 hours). Use of higher starting doses in patients who are not opioid tolerant may cause fatal respiratory depression.

Conversion from NUCYNTA to NUCYNTA ER

Patients can be converted from NUCYNTA to NUCYNTA ER using the equivalent total daily dose of NUCYNTA and dividing it into two equal doses of NUCYNTA ER separated by approximately 12-hour intervals. As an example, a patient receiving 50 mg of NUCYNTA four times per day (200 mg/day) may be converted to 100 mg NUCYNTA ER twice a day.

Conversion from Other Opioids to NUCYNTA ER

There are no established conversion ratios for conversion from other opioids to NUCYNTA ER defined by clinical trials. Initiate dosing using NUCYNTA ER 50 mg orally every 12 hours.

It is safer to underestimate a patient's 24-hour oral tapentadol dosage and provide rescue medication (e.g., immediate-release opioid) than to overestimate the 24-hour oral tapentadol requirements which could result in an adverse reaction due to an overdose. While useful tables of opioid equivalents are readily available, there is inter-patient variability in the potency of opioid drugs and opioid formulations.

Close observation and frequent titration are warranted until pain management is stable on the new opioid. Monitor patients for signs and symptoms of opioid withdrawal and for signs of oversedation/toxicity after converting patients to NUCYNTA ER.

Conversion from Methadone to NUCYNTA ER

Close monitoring is of particular importance when converting from methadone to other opioid agonists. The ratio between methadone and other opioid agonists may vary widely as a function of previous dose exposure. Methadone has a long half-life and can accumulate in the plasma.

2.3 Titration and Maintenance of Therapy

Individually titrate NUCYNTA ER to a dose that provides adequate analgesia and minimizes adverse reactions. Continually reevaluate patients receiving NUCYNTA ER to assess the maintenance of pain control and the relative incidence of adverse reactions, as well as monitoring for the development of addiction, abuse, or misuse [see *Warnings and Precautions (5.1)*]. Frequent communication is important among the prescriber, other members of the healthcare team, the patient, and the caregiver/family during periods of changing analgesic requirements, including initial titration. During chronic therapy, periodically reassess the continued need for opioid analgesics.

Patients who experience breakthrough pain may require a dosage adjustment of NUCYNTA ER, or may need rescue medication with an appropriate dose of an immediate-release analgesic. If the level of pain increases after dose stabilization, attempt to identify the source of increased pain before increasing the NUCYNTA ER dosage. Titrate patients to adequate analgesia with dose increases of 50 mg no more than twice daily every three days. In clinical studies, efficacy with NUCYNTA ER was demonstrated relative to placebo in the dosage range of 100 mg to 250 mg twice daily [see *Clinical Studies (14)*].

If unacceptable opioid-related adverse reactions are observed, consider reducing the dosage. Adjust the dosage to obtain an appropriate balance between management of pain and opioid-related adverse reactions.

2.4 Dosage Modification in Patients with Hepatic Impairment

The use of NUCYNTA ER in patients with severe hepatic impairment (Child-Pugh Score 10-15) is not recommended [see *Warnings and Precautions (5.14)*].

In patients with moderate hepatic impairment (Child-Pugh Score 7 to 9), initiate treatment using 50 mg NUCYNTA ER, administer no more frequently than once every 24 hours, and monitor closely for respiratory and central nervous system depression, particularly during initiation and titration of NUCYNTA ER. The maximum recommended dose for patients with moderate hepatic impairment is 100 mg of NUCYNTA ER per day. Monitor closely for respiratory and central nervous system depression [see *Clinical Pharmacology (12.2)*].

No dosage adjustment is recommended in patients with mild hepatic impairment (Child-Pugh Score 5 to 6) [see *Warnings and Precautions (5.14)*, *Use in Specific Populations (8.6)*, *Clinical Pharmacology (12.3)*].

2.5 Discontinuation of NUCYNTA ER

When a patient no longer requires therapy with NUCYNTA ER tablets, taper the dose gradually, by 25% to 50% every 2 to 4 days, while monitoring carefully for signs and symptoms of withdrawal. If the patient develops these signs or symptoms, raise the dose to the previous level and taper more slowly, either by increasing the interval between decreases, decreasing the amount of change in dose, or both. Do not abruptly discontinue NUCYNTA ER [see *Warnings and Precautions (5.12)*, *Drug Abuse and Dependence (9.3)*].

3 DOSAGE FORMS AND STRENGTHS

NUCYNTA ER 50 mg, 100 mg, 150 mg, 200 mg and 250 mg extended-release tablets are available in the following colors and prints:

- 50 mg extended-release tablets are white oblong-shaped with a black print "OMJ 50" on one side
- 100 mg extended-release tablets are light-blue oblong-shaped with a black print "OMJ 100" on one side
- 150 mg extended-release tablets are blue-green oblong-shaped with a black print "OMJ 150" on one side
- 200 mg extended-release tablets are blue oblong-shaped with a depression in the middle running lengthwise on each side and a black print "OMJ 200" on one side
- 250 mg extended-release tablets are dark blue oblong-shaped with a depression in the middle running lengthwise on each side and a white print "OMJ 250" on one side

4 CONTRAINDICATIONS

NUCYNTA ER is contraindicated in patients with:

- Significant respiratory depression
- Acute or severe bronchial asthma or hypercarbia in an unmonitored setting or in the absence of resuscitative equipment
- Known or suspected gastrointestinal obstruction, including paralytic ileus
- Hypersensitivity (e.g. anaphylaxis, angioedema) to tapentadol or to any other ingredients of the product [see *Adverse Reactions (6.2)*].
- Concurrent use of monoamine oxidase inhibitors (MAOIs) or use of MAOIs within the last 14 days [see *Drug Interactions (7)*].

5 WARNINGS AND PRECAUTIONS

5.1 Addiction, Abuse, and Misuse

NUCYNTA ER contains tapentadol, a Schedule II controlled substance. As an opioid, NUCYNTA ER exposes users to the risks of addiction, abuse, and misuse. Because extended-release products such as NUCYNTA ER deliver the opioid over an extended period of time, there is a greater risk for overdose and death due to the larger amount of tapentadol present [see *Drug Abuse and Dependence (9)*].

Although the risk of addiction in any individual is unknown, it can occur in patients appropriately prescribed NUCYNTA ER. Addiction can occur at recommended doses and if the drug is misused or abused.

Assess each patient's risk for opioid addiction, abuse, or misuse prior to prescribing NUCYNTA ER, and monitor all patients receiving NUCYNTA ER for the development of these behaviors and conditions. Risks are increased in patients with a personal or family history of substance abuse (including drug or alcohol abuse or addiction) or mental illness (e.g., major depression). The potential for these risks should not, however, prevent the prescribing of NUCYNTA ER for the proper management of pain in any given patient. Patients at increased risk may be prescribed opioids such as NUCYNTA ER, but use in such patients necessitates intensive counseling about the risks and proper use of NUCYNTA ER along with intensive monitoring for signs of addiction, abuse, and misuse. Abuse or misuse of NUCYNTA ER by crushing, chewing, snorting, or injecting the dissolved product will result in the uncontrolled delivery of tapentadol and can result in overdose and death [see *Overdosage (10)*].

Opioid are sought by drug abusers and people with addiction disorders and are subject to criminal diversion. Consider these risks when prescribing or dispensing NUCYNTA ER. Strategies to reduce these risks include prescribing the drug in the smallest appropriate quantity and advising the patient on the proper disposal of unused drug [see *Patient Counseling Information (17)*]. Contact the local state professional licensing board or state controlled substances authority for information on how to prevent and detect abuse or diversion of this product.

5.2 Life-Threatening Respiratory Depression

Serious, life-threatening, or fatal respiratory depression has been reported with the use of opioids, even when used as recommended. Respiratory depression, if not immediately recognized and treated, may lead to respiratory arrest and death. Management of respiratory depression may include close observation, supportive measures, and use of opioid antagonists, depending on the patient's clinical status [see *Overdosage (10)*]. Carbon dioxide (CO₂) retention from opioid-induced respiratory depression can exacerbate the sedating effects of opioids.

While serious, life-threatening, or fatal respiratory depression can occur at any time during the use of NUCYNTA ER, the risk is greatest during the initiation of therapy or following a dosage increase. Monitor patients closely for respiratory depression especially within the first 24-72 hours of initiating therapy with and following dosage increases of NUCYNTA ER.

To reduce the risk of respiratory depression, proper dosing and titration of NUCYNTA ER are essential [see *Dosage and Administration (2)*]. Overestimating the NUCYNTA ER

dosage when converting patients from another opioid product can result in fatal overdose with the first dose.

Accidental ingestion of even one dose of NUCYNTA ER, especially by children, can result in respiratory depression and death due to an overdose of tapentadol.

5.3 Neonatal Opioid Withdrawal Syndrome

Prolonged use of NUCYNTA ER during pregnancy can result in withdrawal in the neonate. Neonatal opioid withdrawal syndrome, unlike opioid withdrawal syndrome in adults, may be life-threatening if not recognized and treated, and requires management according to protocols developed by neonatology experts. Observe newborns for signs of neonatal opioid withdrawal syndrome and manage accordingly. Advise pregnant women using opioids for a prolonged period of the risk of neonatal opioid withdrawal syndrome and ensure that appropriate treatment will be available [see *Use in Specific Populations (8.1), Patient Counseling Information (17)*].

5.4 Risk from Concomitant Use with Benzodiazepines or Other CNS Depressants

Patients must not consume alcoholic beverages or prescription or non-prescription products containing alcohol while on NUCYNTA ER therapy. The co-ingestion of alcohol with NUCYNTA ER may result in increased plasma tapentadol levels and a potentially fatal overdose of tapentadol [see *Clinical Pharmacology (12.3)*].

Profound sedation, respiratory depression, coma, and death may result from the concomitant use of NUCYNTA ER with benzodiazepines or other CNS depressants (e.g., non-benzodiazepine sedatives/hypnotics, anxiolytics, tranquilizers, muscle relaxants, general anesthetics, antipsychotics, other opioids, alcohol). Because of these risks, reserve concomitant prescribing of these drugs for use in patients for whom alternative treatment options are inadequate.

Observational studies have demonstrated that concomitant use of opioid analgesics and benzodiazepines increases the risk of drug-related mortality compared to use of opioid analgesics alone. Because of similar pharmacological properties, it is reasonable to expect similar risk with the concomitant use of other CNS depressant drugs with opioid analgesics [see *Drug Interactions (7.4)*].

If the decision is made to prescribe a benzodiazepine or other CNS depressant concomitantly with an opioid analgesic, prescribe the lowest effective dosages and minimum durations of concomitant use. In patients already receiving an opioid analgesic, prescribe a lower initial dose of the benzodiazepine or other CNS depressant than indicated in the absence of an opioid, and titrate based on clinical response. If an opioid analgesic is initiated in a patient already taking a benzodiazepine or other CNS depressant, prescribe a lower initial dose of the opioid analgesic, and titrate based on clinical response. Follow patients closely for signs and symptoms of respiratory depression and sedation.

Advise both patients and caregivers about the risks of respiratory depression and sedation when NUCYNTA ER is used with benzodiazepines or other CNS depressants (including alcohol and illicit drugs). Advise patients not to drive or operate heavy machinery until the effects of concomitant use of the benzodiazepine or other CNS depressant have been determined. Screen patients for risk of substance use disorders, including opioid abuse and misuse, and warn them of the risk for overdose and death associated with the use of additional CNS depressants including alcohol and illicit drugs [see *Drug Interactions (7) and Patient Counseling Information (17)*].

5.5 Risk of Life-Threatening Respiratory Depression in Patients with Chronic Pulmonary Disease or in Elderly, Cachectic, or Debilitated Patients

The use of NUCYNTA ER in patients with acute or severe bronchial asthma in an unmonitored setting or in the absence of resuscitative equipment is contraindicated.

Patients with Chronic Pulmonary Disease: NUCYNTA ER treated patients with significant chronic obstructive pulmonary disease or cor pulmonale, and those with a substantially decreased respiratory reserve, hypoxia, hypercapnia, or pre-existing respiratory depression are at increased risk of decreased respiratory drive including apnea, even at recommended dosages of NUCYNTA ER [see *Warnings and Precautions (5.2)*].

Elderly, Cachectic, or Debilitated Patients: Life-threatening respiratory depression is more likely to occur in elderly, cachectic, or debilitated patients because they may have altered pharmacokinetics or altered clearance compared to younger, healthier patients [see *Warnings and Precautions (5.2)*]. Alternatively, consider the use of non-opioid analgesics in these patients.

Monitor such patients closely, particularly when initiating and titrating NUCYNTA ER and when NUCYNTA ER is given concomitantly with other drugs that depress respiration [see *Warnings and Precautions (5.2)*].

5.6 Serotonin Syndrome with Concomitant Use of Serotonergic Drugs

Cases of serotonin syndrome, a potentially life-threatening condition, have been reported during concomitant use of tapentadol with serotonergic drugs. Serotonergic drugs include selective serotonin reuptake inhibitors (SSRIs), serotonin and norepinephrine reuptake inhibitors (SNRIs), tricyclic antidepressants (TCAs), triptans, 5-HT₃ receptor antagonists, drugs that affect the serotonergic neurotransmitter system (e.g., mirtazapine, trazodone, tramadol), and drugs that impair metabolism of serotonin (including MAO inhibitors, both those intended to treat psychiatric disorders and also

others, such as linezolid and intravenous methylene blue) [see *Drug Interactions (7)*]. This may occur within the recommended dosage range.

Serotonin syndrome symptoms may include mental status changes (e.g., agitation, hallucinations, coma), autonomic instability (e.g., tachycardia, labile blood pressure, hyperthermia), neuromuscular aberrations (e.g., hyperreflexia, incoordination, rigidity), and/or gastrointestinal symptoms (e.g., nausea, vomiting, diarrhea). The onset of symptoms generally occurs within several hours to a few days of concomitant use, but may occur later than that. Discontinue NUCYNTA ER if serotonin syndrome is suspected.

5.7 Adrenal Insufficiency

Cases of adrenal insufficiency have been reported with opioid use, more often following greater than one month of use. Presentation of adrenal insufficiency may include non-specific symptoms and signs including nausea, vomiting, anorexia, fatigue, weakness, dizziness, and low blood pressure. If adrenal insufficiency is suspected, confirm the diagnosis with diagnostic testing as soon as possible. If adrenal insufficiency is diagnosed, treat with physiologic replacement doses of corticosteroids. Wean the patient off of the opioid to allow adrenal function to recover and continue corticosteroid treatment until adrenal function recovers. Other opioids may be tried as some cases reported use of a different opioid without recurrence of adrenal insufficiency. The information available does not identify any particular opioids as being more likely to be associated with adrenal insufficiency.

5.8 Severe Hypotension

NUCYNTA ER may cause severe hypotension including orthostatic hypotension and syncope in ambulatory patients. There is an increased risk in patients whose ability to maintain blood pressure has already been compromised by a reduced blood volume or concurrent administration of certain CNS depressant drugs (e.g., phenothiazines or general anesthetics) [see *Drug Interactions (7)*]. Monitor these patients for signs of hypotension after initiating or titrating the dosage of NUCYNTA ER. In patients with circulatory shock, NUCYNTA ER may cause vasodilation that can further reduce cardiac output and blood pressure. Avoid the use of NUCYNTA ER in patients with circulatory shock.

5.9 Risks of Use in Patients with Increased Intracranial Pressure, Brain Tumors, Head Injury, or Impaired Consciousness

In patients who may be susceptible to the intracranial effects of CO₂ retention (e.g., those with evidence of increased intracranial pressure or brain tumors), NUCYNTA ER may reduce respiratory drive, and the resultant CO₂ retention can further increase intracranial pressure. Monitor such patients for signs of sedation and respiratory depression, particularly when initiating therapy with NUCYNTA ER.

Opioids may also obscure the clinical course in a patient with a head injury. Avoid the use of NUCYNTA ER in patients with impaired consciousness or coma.

5.10 Risks of Use in Patients with Gastrointestinal Conditions

NUCYNTA ER is contraindicated in patients with known or suspected gastrointestinal obstruction, including paralytic ileus.

The tapentadol in NUCYNTA ER may cause spasm of the sphincter of Oddi. Opioids may cause increases in serum amylase. Monitor patients with biliary tract disease, including acute pancreatitis, for worsening symptoms.

5.11 Increased Risk of Seizures in Patients with Seizure Disorders

The tapentadol in NUCYNTA ER may increase the frequency of seizures in patients with seizure disorders, and may increase the risk of seizures occurring in other clinical settings associated with seizures. Monitor patients with a history of seizure disorders for worsened seizure control during NUCYNTA ER therapy.

5.12 Withdrawal

Avoid the use of mixed agonist/antagonist (e.g., pentazocine, nalbuphine, and butorphanol) or partial agonist (e.g., buprenorphine) analgesics in patients who have received or are receiving a course of therapy with a full opioid agonist analgesic, including NUCYNTA ER. In these patients, mixed agonists/antagonists and partial agonist analgesics may reduce the analgesic effect and/or may precipitate withdrawal symptoms [see *Drug Interactions (7)*].

When discontinuing NUCYNTA ER, gradually taper the dose [see *Dosage and Administration (2.3)*]. Do not abruptly discontinue NUCYNTA ER [see *Drug Abuse and Dependence (9.3)*].

5.13 Risks of Driving and Operating Machinery

NUCYNTA ER may impair the mental or physical abilities needed to perform potentially hazardous activities such as driving a car or operating machinery. Warn patients not to drive or operate dangerous machinery unless they are tolerant to the effects of NUCYNTA ER and know how they will react to the medication [see *Patient Counseling Information (17)*].

5.14 Risk of Toxicity in Patients with Hepatic Impairment

A study with an immediate-release formulation of tapentadol in subjects with hepatic impairment showed higher serum concentrations of tapentadol than in those with normal hepatic function. Avoid use of NUCYNTA ER in patients with severe hepatic impairment. Reduce the dose of NUCYNTA ER in patients with moderate hepatic impairment [see

Dosage and Administration (2.4) and Clinical Pharmacology (12.3). Closely monitor patients with moderate hepatic impairment for respiratory and central nervous system depression when initiating and titrating NUCYNTA ER.

5.15 Risk of Toxicity in Patients with Renal Impairment

Use of NUCYNTA ER in patients with severe renal impairment is not recommended due to accumulation of a metabolite formed by glucuronidation of tapentadol. The clinical relevance of the elevated metabolite is not known [see *Clinical Pharmacology (12.3)*].

6 ADVERSE REACTIONS

The following serious adverse reactions are described, or described in greater detail, in other sections:

- Addiction, Abuse, and Misuse [see *Warnings and Precautions (5.1)*]
- Life-Threatening Respiratory Depression [see *Warnings and Precautions (5.2)*]
- Neonatal Opioid Withdrawal Syndrome [see *Warnings and Precautions (5.3)*]
- Interaction with Benzodiazepine or Other CNS Depressants [see *Warnings and Precautions (5.4)*]
- Serotonin Syndrome [see *Warnings and Precautions 5.6*]
- Adrenal Insufficiency [see *Warnings and Precautions (5.7)*]
- Severe Hypotension [see *Warnings and Precautions (5.8)*]
- Gastrointestinal Adverse Reactions [see *Warnings and Precautions (5.10)*]
- Seizures [see *Warnings and Precautions (5.11)*]
- Withdrawal [see *Warnings and Precautions (5.12)*]

6.1 Clinical Trial Experience

Because clinical trials are conducted under widely varying conditions, adverse reaction rates observed in the clinical trials of a drug cannot be directly compared to rates in the clinical trials of another drug and may not reflect the rates observed in clinical practice.

Commonly-Observed Adverse Reactions in Clinical Studies with NUCYNTA ER in Patients with Chronic Pain due to Low Back Pain or Osteoarthritis

The safety data described in Table 1 below are based on three pooled, randomized, double-blind, placebo-controlled, parallel group, 15-week studies of NUCYNTA ER (dosed 100 to 250 mg BID after a 50 mg BID starting dose) in patients with chronic pain due to low back pain (LBP) and osteoarthritis (OA). These trials included 980 NUCYNTA ER-treated patients and 993 placebo-treated patients. The mean age was 57 years old; 63% were female and 37% were male; 83% were White, 10% were Black, and 5% were Hispanic. The most common adverse reactions (reported by $\geq 10\%$ in any NUCYNTA ER dose group) were: nausea, constipation, dizziness, headache, and somnolence.

The most common reasons for discontinuation due to adverse reactions in eight Phase 2/3 pooled studies reported by $\geq 1\%$ in any NUCYNTA ER dose group for NUCYNTA ER- and placebo-treated patients were nausea (4% vs. 1%), dizziness (3% vs. $<1\%$), vomiting (3% vs. $<1\%$), somnolence (2% vs. $<1\%$), constipation (1% vs. $<1\%$), headache (1% vs. $<1\%$), and fatigue (1% vs. $<1\%$), respectively.

Table 1 Adverse Drug Reactions Reported by $\geq 1\%$ of NUCYNTA ER-Treated Patients and Greater than Placebo-Treated Patients in Pooled Parallel-Group Trials¹

	NUCYNTA ER 50 to 250 mg BID ² (n=980)	Placebo (n=993)
Nausea	21%	7%
Constipation	17%	7%
Dizziness	17%	6%
Headache	15%	13%
Somnolence	12%	4%
Fatigue	9%	4%
Vomiting	8%	3%
Dry mouth	7%	2%
Hyperhidrosis	5%	$<1\%$
Pruritus	5%	2%
Insomnia	4%	2%
Dyspepsia	3%	2%
Lethargy	2%	$<1\%$
Asthenia	2%	$<1\%$
Anxiety	2%	1%
Decreased appetite	2%	$<1\%$
Vertigo	2%	$<1\%$
Hot flush	2%	$<1\%$
Disturbance in attention	1%	$<1\%$
Tremor	1%	$<1\%$
Chills	1%	0%
Abnormal dreams	1%	$<1\%$
Depression	1%	$<1\%$
Vision blurred	1%	$<1\%$
Erectile dysfunction	1%	$<1\%$

¹ MedDRA preferred terms. The trials included forced titration during the first week of dosing.

² NUCYNTA ER dosed between 100 and 250 mg BID after a starting dose of 50 mg BID

Commonly-Observed Adverse Reactions in Clinical Studies with NUCYNTA ER in Patients with Neuropathic Pain Associated with Diabetic Peripheral Neuropathy

The types of adverse reactions seen in the studies of patients with painful diabetic peripheral neuropathy (DPN) were similar to what was seen in the low back pain and osteoarthritis trials. The safety data described in Table 2 below are based on two pooled, randomized withdrawal, double-blind, placebo-controlled, 12-week studies of NUCYNTA ER (dosed 100 to 250 mg BID) in patients with neuropathic pain associated with diabetic peripheral neuropathy. These trials included 1040 NUCYNTA ER-treated patients and 343 placebo-treated patients. The mean age was 60 years old; 40% were female and 60% were male; 76% were White, 12% were Black, and 12% were "Other". The most commonly reported ADRs (incidence $\geq 10\%$ in NUCYNTA ER-treated subjects) were: nausea, constipation, vomiting, dizziness, somnolence, and headache.

Table 2 lists the common adverse reactions reported in 1% or more of NUCYNTA ER-treated patients and greater than placebo-treated patients with neuropathic pain associated with diabetic peripheral neuropathy in the two pooled studies.

Table 2: Adverse Drug Reactions Reported by ≥ 1% of NUCYNTA ER-Treated Patients and Greater than Placebo-Treated Patients in Pooled Trials (Studies DPN-1 and DPN-2)¹

	NUCYNTA ER 50 to 250 mg BID ² (n=1040)	Placebo ³ (n=343)
Nausea	27%	8%
Dizziness	18%	2%
Somnolence	14%	<1%
Constipation	13%	<1%
Vomiting	12%	3%
Headache	10%	5%
Fatigue	9%	<1%
Pruritus	8%	0%
Dry mouth	7%	<1%
Diarrhea	7%	5%
Decreased appetite	6%	<1%
Anxiety	5%	4%
Insomnia	4%	3%
Hyperhidrosis	3%	2%
Hot flush	3%	2%
Tremor ⁴	3%	3%
Abnormal dreams	2%	0%
Lethargy	2%	0%
Asthenia	2%	<1%
Irritability	2%	1%
Dyspnea	1%	0%
Nervousness	1%	0%
Sedation	1%	0%
Vision blurred	1%	0%
Pruritus generalized	1%	0%
Vertigo	1%	<1%
Abdominal discomfort	1%	<1%
Hypotension	1%	<1%
Dyspepsia	1%	<1%
Hypoesthesia	1%	<1%
Depression	1%	<1%
Rash	1%	<1%
Chills ⁴	1%	1%
Feeling cold ⁴	1%	1%
Drug withdrawal syndrome	1%	<1%

¹ MedDRA preferred terms.

² NUCYNTA ER dosed between 100 and 250 mg BID after a starting dose of 50 mg BID. It includes ADR reported in the open-label titration period for all subjects and in the double-blind maintenance period for the subjects who were randomized to NUCYNTA ER.

³ It includes ADR reported in the double-blind maintenance period for the subjects who were randomized to placebo after receiving NUCYNTA ER during the open-label titration period.

⁴ Tremor was observed in 3.4% of NUCYNTA ER-treated subjects vs. 3.2% in placebo group, chills- in 1.3% vs. 1.2% in placebo, and feeling cold- in 1.3% vs. 1.2% in placebo.

Other Adverse Reactions Observed During the Premarketing Evaluation of NUCYNTA ER

The following additional adverse drug reactions occurred in less than 1% of NUCYNTA ER-treated patients in ten Phase 2/3 clinical studies:

Nervous system disorders: paresthesia, balance disorder, syncope, memory impairment, mental impairment, depressed level of consciousness, dysarthria, presyncope, coordination abnormal

Gastrointestinal disorders: impaired gastric emptying

General disorders and administration site conditions: feeling abnormal, feeling drunk

Psychiatric disorders: perception disturbances, disorientation, confusional state, agitation, euphoric mood, drug dependence, thinking abnormal, nightmare

Skin and subcutaneous tissue disorders: urticaria

Metabolism and nutrition disorders: weight decreased

Cardiac disorders: heart rate increased, palpitations, heart rate decreased, left bundle branch block

Vascular disorder: blood pressure decreased

Respiratory, thoracic and mediastinal disorders: respiratory depression

Renal and urinary disorders: urinary hesitation, pollakiuria

Reproductive system and breast disorders: sexual dysfunction

Eye disorders: visual disturbance

Immune system disorders: drug hypersensitivity

6.2 Postmarketing Experience

The following adverse reactions have been identified during post approval use of tapentadol. Because these reactions are reported voluntarily from a population of uncertain size, it is not always possible to reliably estimate their frequency or establish a causal relationship to drug exposure.

Psychiatric disorders: hallucination, suicidal ideation, panic attack

Serotonin syndrome: Cases of serotonin syndrome, a potentially life-threatening condition, have been reported during concomitant use of opioids with serotonergic drugs.

Adrenal insufficiency: Cases of adrenal insufficiency have been reported with opioid use, more often following greater than one month of use.

Anaphylaxis: Anaphylaxis has been reported with ingredients contained in NUCYNTA ER.

Androgen deficiency: Cases of androgen deficiency have occurred with chronic use of opioids [see *Clinical Pharmacology* (12.2)].

7 DRUG INTERACTIONS

Table 3 includes clinically significant drug interactions with NUCYNTA ER.

Table 3: Clinically Significant Drug Interactions with NUCYNTA ER

Alcohol	
<i>Clinical Impact:</i>	Concomitant use of alcohol with NUCYNTA ER can result in an increase of tapentadol plasma levels and potentially fatal overdose of tapentadol.
<i>Intervention:</i>	Instruct patients not to consume alcoholic beverages or use prescription or non-prescription products containing alcohol while on NUCYNTA ER therapy.
Benzodiazepines and Other Central Nervous System (CNS) Depressants	
<i>Clinical Impact:</i>	Due to additive pharmacologic effect, the concomitant use of benzodiazepines or other CNS depressants, including alcohol, can increase the risk of hypotension, respiratory depression, profound sedation, coma, and death.
<i>Intervention:</i>	Reserve concomitant prescribing of these drugs for use in patients for whom alternative treatment options are inadequate. Limit dosages and durations to the minimum required. Follow patients closely for signs of respiratory depression and sedation [see <i>Warnings and Precautions (5.4)</i>].
<i>Examples:</i>	Benzodiazepines and other sedatives/hypnotics, anxiolytics, tranquilizers, muscle relaxants, general anesthetics, antipsychotics, other opioids, alcohol.
Serotonergic Drugs	
<i>Clinical Impact:</i>	The concomitant use of opioids with other drugs that affect the serotonergic neurotransmitter system has resulted in serotonin syndrome [see <i>Warnings and Precautions 5.6</i>].
<i>Intervention:</i>	If concomitant use is warranted, carefully observe the patient, particularly during treatment initiation and dose adjustment. Discontinue NUCYNTA ER if serotonin syndrome is suspected.
<i>Examples:</i>	Selective serotonin reuptake inhibitors (SSRIs), serotonin and norepinephrine reuptake inhibitors (SNRIs), tricyclic antidepressants (TCAs), triptans, 5-HT ₃ receptor antagonists, drugs that affect the serotonin neurotransmitter system (e.g., mirtazapine, trazodone, tramadol), monoamine oxidase (MAO) inhibitors (those intended to treat psychiatric disorders and also others, such as linezolid and intravenous methylene blue).
Monoamine Oxidase Inhibitors (MAOIs)	
<i>Clinical Impact:</i>	MAOI interactions with opioids may manifest as serotonin syndrome or opioid toxicity (e.g., respiratory depression, coma) [see <i>Warnings and Precautions (5.2)</i>].
<i>Intervention:</i>	Do not use NUCYNTA ER in patients taking MAOIs or within 14 days of stopping such treatment.
<i>Examples:</i>	phenelzine, tranylcypromine, linezolid
Mixed Agonist/Antagonist and Partial Agonist Opioid Analgesics	
<i>Clinical Impact:</i>	May reduce the analgesic effect of NUCYNTA ER and/or precipitate withdrawal symptoms.
<i>Intervention:</i>	Avoid concomitant use.
<i>Examples:</i>	butorphanol, nalbuphine, pentazocine, buprenorphine
Muscle Relaxants	
<i>Clinical Impact:</i>	Tapentadol may enhance the neuromuscular blocking action of skeletal muscle relaxants and produce an increased degree of respiratory depression.
<i>Intervention:</i>	Monitor patients for signs of respiratory depression that may be greater than otherwise expected and decrease the dosage of NUCYNTA ER and/or the muscle relaxant as necessary.
Diuretics	
<i>Clinical Impact:</i>	Opioids can reduce the efficacy of diuretics by inducing the release of antidiuretic hormone.
<i>Intervention:</i>	Monitor patients for signs of diminished diuresis and/or effects on blood pressure and increase the dosage of the diuretic as needed.
Anticholinergic Drugs	
<i>Clinical Impact:</i>	The concomitant use of anticholinergic drugs may increase risk of urinary retention and/or severe constipation, which may lead to paralytic ileus.
<i>Intervention:</i>	Monitor patients for signs of urinary retention or reduced gastric motility when NUCYNTA ER is used concomitantly with anticholinergic drugs.

8 USE IN SPECIFIC POPULATIONS

8.1 Pregnancy

Pregnancy Category C

Risk Summary

Prolonged use of opioid analgesics during pregnancy may cause neonatal opioid withdrawal syndrome [see *Warnings and Precautions (5.3)*]. Available data with NUCYNTA ER are insufficient to inform a drug-associated risk for major birth defects and miscarriage. In animal reproduction studies, embryofetal mortality and structural malformations were observed with subcutaneous administration of tapentadol during organogenesis to rabbits and delays in skeletal maturation were observed in rats at exposures equivalent to and less than the maximum recommended human dose (MRHD),

respectively. When administered to pregnant rats during organogenesis and through lactation, increased pup mortality was noted following oral tapentadol exposures to doses equivalent to the MRHD [see *Data*]. Based on animal data, advise pregnant women of the potential risk to a fetus.

The background risk of major birth defects and miscarriage for the indicated population is unknown. Adverse outcomes in pregnancy can occur regardless of the health of the mother or the use of medications. In the U.S. general population, the estimated background risk of major birth defects and miscarriage in clinically recognized pregnancies is 2-4% and 15-20%, respectively.

Clinical Considerations

Fetal/neonatal adverse reactions

Prolonged use of opioid analgesics during pregnancy for medical or nonmedical purposes can result in physical dependence in the neonate and neonatal opioid withdrawal syndrome shortly after birth. Neonatal opioid withdrawal syndrome presents as irritability, hyperactivity and abnormal sleep pattern, high pitched cry, tremor, vomiting, diarrhea, and failure to gain weight. The onset, duration, and severity of neonatal opioid withdrawal syndrome vary based on the specific opioid used, duration of use, timing and amount of last maternal use, and rate of elimination of the drug by the newborn. Observe newborns for symptoms of neonatal opioid withdrawal syndrome and manage accordingly [see *Warnings and Precautions (5.3)*].

Labor or Delivery

Opioids cross the placenta and may produce respiratory depression and psychophysiologic effects in neonates. An opioid antagonist, such as naloxone, must be available for reversal of opioid-induced respiratory depression in the neonate. NUCYNTA ER is not recommended for use in pregnant women during and immediately prior to labor, when use of shorter-acting analgesics or other analgesic techniques are more appropriate. Opioid analgesics, including NUCYNTA ER, can prolong labor through actions that temporarily reduce the strength, duration, and frequency of uterine contractions. However this effect is not consistent and may be offset by an increased rate of cervical dilatation, which tends to shorten labor. Monitor neonates exposed to opioid analgesics during labor for signs of excess sedation and respiratory depression.

Data

Animal Data

Tapentadol HCl was evaluated for teratogenic effects in pregnant rats and rabbits following intravenous and subcutaneous exposure during the period of embryofetal organogenesis. When tapentadol was administered twice daily by the subcutaneous route in rats at dose levels of 10, 20, or 40 mg/kg/day [producing up to 1.36 times the plasma exposure at the maximum recommended human dose (MRHD) of 500 mg/day for NUCYNTA ER based on an area under the time-curve (AUC) comparison], no teratogenic effects were observed. Evidence of embryofetal toxicity included transient delays in skeletal maturation (i.e., reduced ossification) at the 40 mg/kg/day dose which was associated with significant maternal toxicity. Administration of tapentadol HCl in rabbits at doses of 4, 10, or 24 mg/kg/day by subcutaneous injection [producing 0.3, 0.8, and 2.5 times the plasma exposure at the MRHD based on an AUC comparison, respectively] revealed embryofetal toxicity at doses ≥ 10 mg/kg/day. Findings included reduced fetal viability, skeletal delays and other variations. In addition, there were multiple malformations including gastroschisis/thoracogastroschisis, amelia/phocomelia, and cleft palate at doses ≥ 10 mg/kg/day and above, and anophthalmia, encephalopathy, and spina bifida at the high dose of 24 mg/kg/day. Embryofetal toxicity, including malformations, may be secondary to the significant maternal toxicity observed in the study.

In a study of pre- and postnatal development in rats, oral administration of tapentadol at doses of 20, 50, 150, or 300 mg/kg/day to pregnant and lactating rats during the late gestation and early postnatal period [resulting in up to 2.28 times the plasma exposure at the MRHD on an AUC basis] did not influence physical or reflex development, the outcome of neurobehavioral tests or reproductive parameters. At maternal tapentadol doses ≥ 150 mg/kg/day, a dose-related increase in pup mortality was observed to postnatal Day 4. Treatment-related developmental delay was observed in the dead pups, including incomplete ossification. In addition, significant reductions in pup body weights and body weight gains at doses associated with maternal toxicity (150 mg/kg/day and above) were seen throughout lactation.

8.2 Lactation

Risk Summary

There is insufficient/limited information on the excretion of tapentadol in human or animal breast milk. Physicochemical and available pharmacodynamic/toxicological data on tapentadol point to excretion in breast milk and risk to the breastfeeding child cannot be excluded.

Because of the potential for serious adverse reactions including excess sedation and respiratory depression in a breastfed infant, advise patients that breast feeding is not recommended during treatment with NUCYNTA ER.

Clinical Considerations

Monitor infants exposed to NUCYNTA ER through breast milk for excess sedation and respiratory depression. Withdrawal symptoms can occur in breastfed infants when

maternal administration of an opioid analgesic is stopped, or when breast-feeding is stopped.

8.3 Females and Males of Reproductive Potential

Infertility

Chronic use of opioids may cause reduced fertility in females and males of reproductive potential. It is not known whether these effects on fertility are reversible [see *Adverse Reactions* (6.2)].

8.4 Pediatric Use

The safety and efficacy of NUCYNTA ER in pediatric patients less than 18 years of age have not been established.

8.5 Geriatric Use

Of the total number of patients in Phase 2/3 double-blind, multiple-dose clinical studies of NUCYNTA ER, 28% (1023/3613) were 65 years and over, while 7% (245/3613) were 75 years and over. No overall differences in effectiveness or tolerability were observed between these patients and younger patients.

Elderly patients (aged 65 or older) may have increased sensitivity to tapentadol. In general, use caution when selecting a dosage for an elderly patient, usually starting at the low end of the dosing range, reflecting the greater frequency of decreased hepatic, renal, or cardiac function and of concomitant disease or other drug therapy [see *Clinical Pharmacology* (12.3)].

Respiratory depression is the chief risk for elderly patients treated with opioids, and has occurred after large initial doses were administered to patients who were not opioid-tolerant or when opioids were co-administered with other agents that depress respiration. Titrate the dosage of NUCYNTA ER slowly in geriatric patients and monitor closely for signs of central nervous system and respiratory depression [see *Warnings and Precautions* (5.5)].

Tapentadol is known to be substantially excreted by the kidney, and the risk of adverse reactions to this drug may be greater in patients with impaired renal function. Because elderly patients are more likely to have decreased renal function, care should be taken in dose selection, and it may be useful to monitor renal function.

8.6 Hepatic Impairment

Use of NUCYNTA ER in patients with severe hepatic impairment (Child-Pugh Score 10-15) is not recommended. In patients with moderate hepatic impairment (Child-Pugh Score 7 to 9), dosage reduction of NUCYNTA ER is recommended [see *Dosage and Administration* (2.4)]. No dosage adjustment is recommended in patients with mild hepatic impairment (Child-Pugh Score 5 to 6) [see *Warnings and Precautions* (5.14), *Clinical Pharmacology* (12.3)].

8.7 Renal Impairment

Use of NUCYNTA ER in patients with severe renal impairment (creatinine clearance less than 30 mL/minute) is not recommended. No dosage adjustment is recommended in patients with mild or moderate renal impairment (creatinine clearance 30-90 mL/minute) [see *Warnings and Precautions* (5.14), *Clinical Pharmacology* (12.3)].

9 DRUG ABUSE AND DEPENDENCE

9.1 Controlled Substance

NUCYNTA ER contains tapentadol, a Schedule II controlled substance.

9.2 Abuse

NUCYNTA ER contains tapentadol, a substance with a high potential for abuse similar to other opioids including fentanyl, hydrocodone, hydromorphone, methadone, morphine, oxycodone, and oxymorphone. NUCYNTA ER can be abused and is subject to misuse, addiction, and criminal diversion [see *Warnings and Precautions* (5.2)].

The high drug content in extended-release formulations adds to the risk of adverse outcomes from abuse and misuse.

All patients treated with opioids require careful monitoring for signs of abuse and addiction, because use of opioid analgesic products carries the risk of addiction even under appropriate medical use.

Prescription drug abuse is the intentional non-therapeutic use of a prescription drug, even once, for its rewarding psychological or physiological effects.

Drug addiction is a cluster of behavioral, cognitive, and physiological phenomena that develop after repeated substance use and includes: a strong desire to take the drug, difficulties in controlling its use, persisting in its use despite harmful consequences, a higher priority given to drug use than to other activities and obligations, increased tolerance, and sometimes a physical withdrawal.

“Drug-seeking” behavior is very common in persons with substance use disorders. Drug-seeking tactics include emergency calls or visits near the end of office hours, refusal to undergo appropriate examination, testing, or referral, repeated “loss” of prescriptions, tampering with prescriptions, and reluctance to provide prior medical records or contact information for other treating healthcare provider(s). “Doctor shopping” (visiting multiple prescribers to obtain additional prescriptions) is common among drug abusers, and people suffering from untreated addiction. Preoccupation with achieving adequate pain relief can be appropriate behavior in a patient with poor pain control.

Abuse and addiction are separate and distinct from physical dependence and tolerance. Healthcare providers should be aware that addiction may not be accompanied by concurrent tolerance and symptoms of physical dependence in all addicts. In addition, abuse of opioids can occur in the absence of true addiction.

NUCYNTA ER, like other opioids, can be diverted for non-medical use into illicit channels of distribution. Careful record-keeping of prescribing information, including quantity, frequency, and renewal requests, as required by state and federal law, is strongly advised.

Proper assessment of the patient, proper prescribing practices, periodic re-evaluation of therapy, and proper dispensing and storage are appropriate measures that help to limit abuse of opioid drugs.

Risks Specific to Abuse of NUCYNTA ER

NUCYNTA ER is for oral use only. Abuse of NUCYNTA ER poses a risk of overdose and death. The risk is increased with concurrent use of NUCYNTA ER with alcohol and other central nervous system depressants. With intravenous abuse the inactive ingredients in NUCYNTA ER can result in local tissue necrosis, infection, pulmonary granulomas, embolism and death, and increased risk of endocarditis and valvular heart injury.

With intravenous abuse the inactive ingredients in NUCYNTA ER can result in local tissue necrosis, infection, pulmonary granulomas, embolism and death, and increased risk of endocarditis and valvular heart injury. Parenteral drug abuse is commonly associated with transmission of infectious diseases such as hepatitis and HIV.

9.3 Dependence

Both tolerance and physical dependence can develop during chronic opioid therapy. Tolerance is the need for increasing doses of opioids to maintain a defined effect such as analgesia (in the absence of disease progression or other external factors). Tolerance may occur to both the desired and undesired effects of drugs, and may develop at different rates for different effects.

Physical dependence results in withdrawal symptoms after abrupt discontinuation or a significant dosage reduction of a drug. Withdrawal also may be precipitated through the administration of drugs with opioid antagonist activity, (e.g., naloxone, nalmefene), mixed agonist/antagonist analgesics (e.g., pentazocine, butorphanol, nalbuphine), or partial agonists (e.g., buprenorphine). Physical dependence may not occur to a clinically significant degree until after several days to weeks of continued opioid usage.

NUCYNTA ER should not be abruptly discontinued [see *Dosage and Administration* (2.3)]. If NUCYNTA ER is abruptly discontinued in a physically-dependent patient, a withdrawal syndrome may occur. Some or all of the following can characterize this syndrome: restlessness, lacrimation, rhinorrhea, yawning, perspiration, chills, piloerection, myalgia, mydriasis, irritability, anxiety, backache, joint pain, weakness, abdominal cramps, insomnia, nausea, anorexia, vomiting, diarrhea, increased blood pressure, respiratory rate, or heart rate.

Infants born to mothers physically dependent on opioids will also be physically dependent and may exhibit respiratory difficulties and withdrawal symptoms [see *Use in Specific Populations* (8.1)].

10 OVERDOSAGE

Clinical Presentation

Acute overdosage with NUCYNTA ER can be manifested by respiratory depression, somnolence progressing to stupor or coma, skeletal muscle flaccidity, cold and clammy skin, constricted pupils, and, in some cases pulmonary edema, bradycardia, hypotension, partial or complete airway obstruction, atypical snoring and death. Marked mydriasis rather than miosis may be seen with hypoxia in overdose situations [see *Clinical Pharmacology* (12.2)].

Treatment of Overdose

In case of overdose, priorities are the reestablishment of a patent and protected airway and institution of assisted or controlled ventilation, if needed. Employ other supportive measures (including oxygen, vasopressors) in the management of circulatory shock and pulmonary edema as indicated. Cardiac arrest or arrhythmias will require advanced life support techniques.

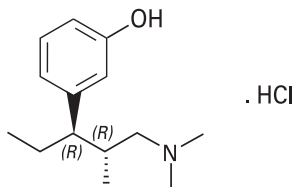
The opioid antagonists, naloxone or nalmefene, are specific antidotes to respiratory depression resulting from opioid overdose. For clinically significant respiratory or circulatory depression secondary to tapentadol overdose, administer an opioid antagonist. Opioid antagonists should not be administered in the absence of clinically significant respiratory or circulatory depression secondary to tapentadol overdose. Because the duration of reversal would be expected to be less than the duration of action of tapentadol in NUCYNTA ER, carefully monitor the patient until spontaneous respiration is reliably reestablished. NUCYNTA ER will continue to release tapentadol and add to the tapentadol load for 24 to 48 hours or longer following ingestion, necessitating prolonged monitoring. If the response to an opioid antagonist is suboptimal or only brief in nature, additional antagonist should be given as directed in the product’s prescribing information.

In an individual physically dependent on opioids, administration of the recommended usual dosage of the antagonist will precipitate an acute withdrawal syndrome. The severity of the withdrawal symptoms experienced will depend on the degree of physical

dependence and the dose of the antagonist administered. If a decision is made to treat serious respiratory depression in the physically dependent patient, administration of the antagonist should be initiated with care and by titration with smaller than usual doses of the antagonist.

11 DESCRIPTION

NUCYNTA ER (tapentadol) is an opioid agonist, supplied in extended-release film-coated tablets for oral administration, containing 58.24, 116.48, 174.72, 232.96, and 291.20 mg of tapentadol hydrochloride in each tablet strength, corresponding to 50, 100, 150, 200, and 250 mg of tapentadol free-base, respectively. The chemical name is 3-[(1*R*,2*R*)-3-(dimethylamino)-1-ethyl-2-methylpropyl]phenol monohydrochloride. The structural formula is:



The molecular weight of tapentadol HCl is 257.80, and the molecular formula is $C_{14}H_{23}NO \cdot HCl$. The n-octanol: water partition coefficient log P value is 2.89. The pKa values are 9.36 and 10.45. In addition to the active ingredient tapentadol HCl, tablets also contain the following inactive ingredients: alpha-tocopherol (vitamin E), hypromellose, polyethylene glycol, and polyethylene oxide. The film coating is comprised of polyvinyl alcohol, polyethylene glycol, talc, titanium dioxide, and the colorant FD&C Blue #2 aluminum lake is used for 100, 150, 200, and 250 mg strengths; and additionally, yellow iron oxide is used in 150 mg tablets. Printing inks contain shellac glaze and propylene glycol for all strengths, and black iron oxide (50, 100, 150 and 200 mg tablets) or titanium dioxide (250 mg tablets).

12 CLINICAL PHARMACOLOGY

12.1 Mechanism of Action

Tapentadol is a centrally-acting synthetic analgesic. The exact mechanism of action is unknown. Although the clinical relevance is unclear, preclinical studies have shown that tapentadol is a mu-opioid receptor (MOR) agonist and a norepinephrine reuptake inhibitor (NRI). Analgesia in animal models is derived from both of these properties.

12.2 Pharmacodynamics

Effects on the Central Nervous System (CNS)

Tapentadol produces respiratory depression, by direct action on the brainstem respiratory centers. The respiratory depression involves a reduction in the responsiveness of the brain stem respiratory centers to both increases in carbon dioxide tension and electrical stimulation.

Tapentadol causes miosis, even in total darkness. Pinpoint pupils are a sign of opioid overdose but are not pathognomonic (e.g., pontine lesions of hemorrhagic or ischemic origin may produce similar findings). Marked mydriasis rather than miosis may be seen with hypoxia in overdose situations.

Effects on the Gastrointestinal Tract and on Other Smooth Muscle

Tapentadol causes a reduction in motility and is associated with an increase in tone in the antrum of the stomach and duodenum. Digestion of food in the small intestine is delayed and propulsive contractions are decreased. Propulsive peristaltic waves in the colon are decreased, while tone is increased to the point of spasm, resulting in constipation. Other opioid induced effects may include a reduction in biliary and pancreatic secretions, spasm of the sphincter of Oddi, and transient elevations in serum amylase.

Effects on the Cardiovascular System

There was no effect of therapeutic and supratherapeutic doses of tapentadol on the QT interval. In a randomized, double-blind, placebo- and positive-controlled crossover study, healthy subjects were administered five consecutive immediate-release formulation doses of tapentadol 100 mg every 6 hours, tapentadol 150 mg every 6 hours, placebo and a single oral dose of moxifloxacin. Similarly, the immediate-release formulation tapentadol had no relevant effect on other ECG parameters (heart rate, PR interval, QRS duration, T-wave or U-wave morphology).

Tapentadol produces peripheral vasodilation which may result in orthostatic hypotension or syncope. Manifestations of histamine release and/or peripheral vasodilation may include pruritus, flushing, red eyes, sweating, and/or orthostatic hypotension.

Effects on the Endocrine System

Opioids inhibit the secretion of adrenocorticotropic hormone (ACTH), cortisol, and luteinizing hormone (LH) in humans [see *Adverse Reactions (6.2)*]. They also stimulate prolactin, growth hormone (GH) secretion, and pancreatic secretion of insulin and glucagon.

Chronic use of opioids may influence the hypothalamic-pituitary-gonadal axis, leading to androgen deficiency that may manifest as low libido, impotence, erectile

dysfunction, amenorrhea, or infertility. The causal role of opioids in the clinical syndrome of hypogonadism is unknown because the various medical, physical, lifestyle, and psychological stressors that may influence gonadal hormone levels have not been adequately controlled for in studies conducted to date [see *Adverse Reactions (6.2)*].

Effects on the Immune System

Opioids have been shown to have a variety of effects on components of the immune system in *in vitro* and animal models. The clinical significance of these findings is unknown. Overall, the effects of opioids appear to be modestly immunosuppressive.

Concentration-Efficacy Relationships

The minimum effective plasma concentration will vary widely among patients, especially among patients who have been previously treated with potent agonist opioids. The minimum effective analgesic concentration of tapentadol for any individual patient may increase over time due to an increase in pain, development of a new pain syndrome, and/or potential development of analgesic tolerance [see *Dosage and Administration (2.1, 2.3)*].

Concentration-Adverse Experience Relationships

There is a relationship between increasing tapentadol plasma concentration and increasing frequency of dose-related adverse reactions such as nausea, vomiting, CNS effects, and respiratory depression. In opioid-tolerant patients, the situation may be altered by the development of tolerance to opioid-related adverse reactions [see *Dosage and Administration (2.1, 2.2, 2.3)*].

12.3 Pharmacokinetics

Absorption

The mean absolute bioavailability after single-dose administration (fasting) of NUCYNTA ER is approximately 32% due to extensive first-pass metabolism. Maximum serum concentrations of tapentadol are observed between 3 and 6 hours after administration of NUCYNTA ER. Dose proportional increases for AUC have been observed after administration of NUCYNTA ER over the therapeutic dose range.

Steady-state exposure of tapentadol is attained after the third dose (i.e., 24 hours after first twice daily multiple dose administration). Following dosing with 250 mg every 12 hours, minimal accumulation was observed.

Food Effect

The AUC and C_{max} increased by 6% and 17%, respectively, when NUCYNTA ER tablet was administered after a high-fat, high-calorie breakfast. NUCYNTA ER may be given with or without food.

Distribution

Tapentadol is widely distributed throughout the body. Following intravenous administration, the volume of distribution (V_z) for tapentadol is 540 +/- 98 L. The plasma protein binding is low and amounts to approximately 20%.

Elimination

Metabolism

In humans, about 97% of the parent compound is metabolized. Tapentadol is mainly metabolized via Phase 2 pathways, and only a small amount is metabolized by Phase 1 oxidative pathways. The major pathway of tapentadol metabolism is conjugation with glucuronic acid to produce glucuronides. After oral administration approximately 70% (55% O-glucuronide and 15% sulfate of tapentadol) of the dose is excreted in urine in the conjugated form. A total of 3% of drug was excreted in urine as unchanged drug. Tapentadol is additionally metabolized to N-desmethyl tapentadol (13%) by CYP2C9 and CYP2C19 and to hydroxy tapentadol (2%) by CYP2D6, which are further metabolized by conjugation. Therefore, drug metabolism mediated by cytochrome P450 system is of less importance than phase 2 conjugation.

None of the metabolites contribute to the analgesic activity.

Excretion

Tapentadol and its metabolites are excreted almost exclusively (99%) via the kidneys. The terminal half-life is on average 5 hours after oral administration. The total clearance of tapentadol is 1603 +/- 227 mL/min.

Specific Populations

Age: Geriatric Population

The mean exposure (AUC) to tapentadol was similar in elderly subjects compared to young adults, with a 16% lower mean C_{max} observed in the elderly subject group compared to young adult subjects.

Hepatic Impairment

Administration of tapentadol resulted in higher exposures and serum levels to tapentadol in subjects with impaired hepatic function compared to subjects with normal hepatic function. The ratio of tapentadol pharmacokinetic parameters for the mild hepatic impairment group (Child-Pugh Score 5 to 6) and moderate hepatic impairment group (Child-Pugh Score 7 to 9) in comparison to the normal hepatic function group were 1.7 and 4.2, respectively, for AUC; 1.4 and 2.5, respectively, for C_{max} ; and 1.2 and 1.4, respectively, for $t_{1/2}$. The rate of formation of tapentadol-O-glucuronide was lower in subjects with increased liver impairment.

Renal Impairment

AUC and C_{max} of tapentadol were comparable in subjects with varying degrees of renal function (from normal to severely impaired). In contrast, increasing exposure (AUC) to tapentadol-O-glucuronide was observed with increasing degree of renal impairment. In subjects with mild ($CL_{CR} = 50$ to <80 mL/min), moderate ($CL_{CR} = 30$ to <50 mL/min), and severe ($CL_{CR} = <30$ mL/min) renal impairment, the AUC of tapentadol-O-glucuronide was 1.5-, 2.5-, and 5.5-fold higher compared with normal renal function, respectively.

Drug Interaction Studies

Tapentadol is mainly metabolized by Phase 2 glucuronidation, a high capacity/low affinity system; therefore, clinically relevant interactions caused by Phase 2 metabolism are unlikely to occur. Naproxen and probenecid increased the AUC of tapentadol by 17% and 57%, respectively. These changes are not considered clinically relevant and no change in dose is required.

No changes in the pharmacokinetic parameters of tapentadol were observed when acetaminophen and acetylsalicylic acid were given concomitantly.

In vitro studies did not reveal any potential of tapentadol to either inhibit or induce cytochrome P450 enzymes. Only a minor amount of tapentadol is metabolized via the oxidative pathway. Thus, clinically relevant interactions mediated by the cytochrome P450 system are unlikely to occur.

The pharmacokinetics of tapentadol were not affected when gastric pH or gastrointestinal motility were increased by omeprazole and metoclopramide, respectively. Plasma protein binding of tapentadol is low (approximately 20%). Therefore, the likelihood of pharmacokinetic drug-drug interactions by displacement from the protein binding site is low.

Alcohol

NUCYNTA ER may be expected to have additive effects when used in conjunction with alcohol, other opioids, or illicit drugs that cause central nervous system depression, because respiratory depression, hypotension, hypertension, and profound sedation, coma or death may result [see *Warnings and Precautions* (5.4)].

An *in vivo* study examined the effect of alcohol (240 mL of 40%) on the bioavailability of a single dose of 100 mg and 250 mg of NUCYNTA ER tablet in healthy, fasted volunteers. After co-administration of a 100 mg NUCYNTA ER tablet and alcohol, the mean C_{max} value increased by 48% compared to control with a range of 0.99-fold to 4.38-fold. The mean tapentadol AUC_{last} and AUC_{inf} were increased by 17%; the T_{max} and $t_{1/2}$ were unchanged. After co-administration of a 250 mg NUCYNTA ER tablet and alcohol, the mean C_{max} value increased by 28% compared to control with a range of 0.90-fold to 2.67-fold. The mean tapentadol AUC_{last} and AUC_{inf} were increased by 16%; the T_{max} and $t_{1/2}$ were unchanged.

13 NONCLINICAL TOXICOLOGY

13.1 Carcinogenesis, Mutagenesis, Impairment of Fertility

Carcinogenesis

In mice, tapentadol HCl was administered by oral gavage at dosages of 50, 100 and 200 mg/kg/day for 2 years (up to 0.34 times in the male mice and 0.25 times in the female mice the plasma exposure at the maximum recommended human dose [MRHD] for NUCYNTA ER on an area under the time-curve [AUC] basis). No increase in tumor incidence was observed at any dose level.

In rats, tapentadol HCl was administered in diet at dosages of 10, 50, 125 and 250 mg/kg/day for two years (up to 0.20 times in the male rats and 0.75 times in the female rats the plasma exposure at the MRHD on an AUC basis). No increase in tumor incidence was observed at any dose level.

Mutagenesis

Tapentadol did not induce gene mutations in bacteria, but was clastogenic with metabolic activation in a chromosomal aberration test in V79 cells. The test was repeated and was negative in the presence and absence of metabolic activation. The one positive result for tapentadol was not confirmed *in vivo* in rats, using the two endpoints of chromosomal aberration and unscheduled DNA synthesis, when tested up to the maximum tolerated dose.

Impairment of Fertility

Tapentadol HCl was administered intravenously to male or female rats at dosages of 3, 6, or 12 mg/kg/day (representing exposures of up to approximately 0.56 times in the male rats and 0.50 times in the female rats the exposure at the MRHD on an AUC basis, based on extrapolation from toxicokinetic analyses in a separate 4-week intravenous study in rats). Tapentadol did not alter fertility at any dose level. Maternal toxicity and adverse effects on embryonic development, including decreased number of implantations, decreased numbers of live conceptuses, and increased pre- and post-implantation losses occurred at dosages ≥ 6 mg/kg/day.

13.2 Animal Toxicology and/or Pharmacology

In toxicological studies with tapentadol, the most common systemic effects of tapentadol were related to the mu-opioid receptor agonist and norepinephrine reuptake inhibition pharmacodynamic properties of the compound. Transient, dose-dependent and predominantly CNS-related findings were observed, including impaired respiratory

function and convulsions, the latter occurring in the dog at plasma levels (C_{max}), which are in the range associated with the maximum recommended human dose (MRHD).

14 CLINICAL STUDIES

14.1 Clinical Trials Summary

The efficacy of NUCYNTA ER was studied in five studies in patients with chronic pain and DPN. Efficacy was demonstrated in one randomized, double-blind, placebo- and active-controlled study in patients with chronic low back pain (LBP), and two randomized, double-blind, placebo-controlled studies in patients with pain related to diabetic peripheral neuropathy (DPN-1 and DPN-2).

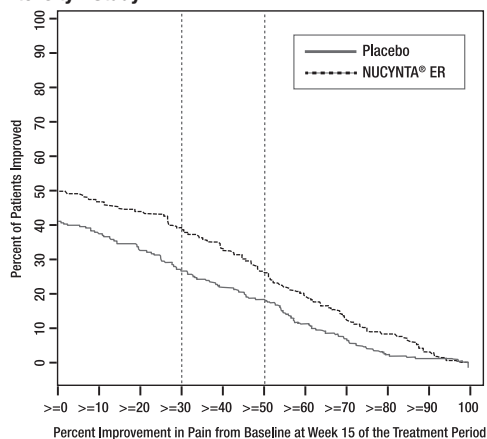
14.2 Moderate to Severe Chronic Low Back Pain

In the LBP study, patients 18 years of age or older with chronic low back pain and a baseline pain score of ≥ 5 on an 11-point numerical rating scale (NRS), ranging from 0 to 10 were enrolled and randomized to 1 of 3 treatments: NUCYNTA ER, active-control (an extended-release Schedule II opioid analgesic), or placebo.

Patients randomized to NUCYNTA ER initiated therapy with a dose of 50 mg twice daily for three days. After three days, the dose was increased to 100 mg twice daily. Subsequent titration was allowed over a 3-week titration period to a dose up to 250 mg twice daily, followed by a 12-week maintenance period. There were 981 patients randomized. The mean age of the study population was 50 (range 18 to 89) years; the mean baseline pain intensity score was 8 (SD 1). Approximately half of the patients were opioid-naïve (had not taken opioids during the three months prior to the screening visit). The number of patients completing the study was 51% in the placebo group, 54% in the NUCYNTA ER group and 43% in the active-control group. Lack of efficacy was the most common reason for discontinuation among placebo-treated patients (21%), whereas adverse events were the most common reason for discontinuation among the active treatment groups (17% and 32% for NUCYNTA ER and active-control, respectively).

After 15 weeks of treatment, patients taking NUCYNTA ER had a significantly greater pain reduction compared to placebo. The proportion of patients with various degrees of improvement is shown in Figure 1. The figure is cumulative, such that patients, whose change from baseline is, for example 50%, are also included at every level of improvement below 50%. Patients who did not complete the study were assigned 0% improvement.

Figure 1: Percentage of Patients Achieving Various Levels of Improvement in Pain Intensity - Study LBP¹



¹The last week of Study LBP was Week 15.

14.3 Neuropathic Pain Associated with Diabetic Peripheral Neuropathy

In the two DPN studies, patients 18 years of age or older with pain due to diabetic peripheral neuropathy and a pain score of ≥ 5 on an 11-point numerical rating scale (NRS) ranging from 0 (no pain) to 10 (worst possible pain) were enrolled. Following an open-label treatment period in which NUCYNTA ER was administered to all patients for three weeks and titrated to an individually stable dose, patients who had tolerated the drug and demonstrated at least a 1-point improvement in pain intensity on the NRS at the end of the open-label titration period were randomized to either continue the NUCYNTA ER dose (100 mg to 250 mg twice a day) reached during the open-label titration period, or receive placebo for 12 weeks of maintenance treatment. During the first 4 days of the double-blind maintenance period patients were permitted to take tapentadol ER 25 mg up to two times a day as additional medication. After the first 4 days, patients were allowed to take tapentadol ER 25 mg once daily as needed for pain, in addition to the patient's assigned study drug. Patients recorded their pain in a diary twice daily.

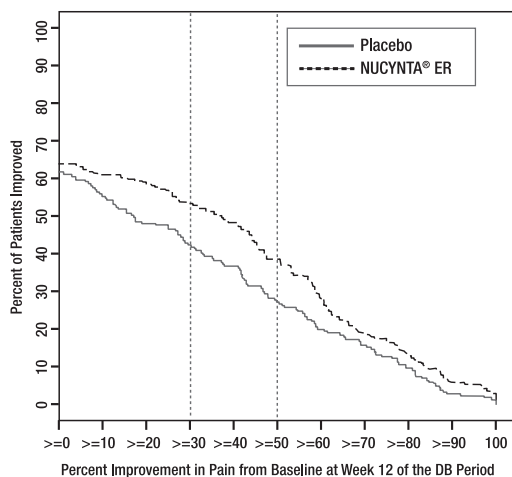
Study DPN-1: A total of 591 patients entered open-label treatment and 389 patients met the criteria for randomization into the double-blind treatment period. The mean age of the randomized population was 60 (range 29 to 87) years; approximately two-thirds of

the patients were opioid-naïve (had not taken opioids during the three months prior to the screening visit).

During the titration period, 34% of patients discontinued open-label NUCYNTA ER. The most common reasons for discontinuation in the double-blind treatment period were lack of efficacy in the placebo group (14%) and adverse events in the NUCYNTA ER group (15%).

After 12 weeks of treatment, NUCYNTA ER provided a significantly greater reduction in pain intensity from baseline to the end of the 12-week double-blind period compared to placebo. Figure 2 displays the proportion of randomized patients achieving various degrees of improvement in pain intensity from the start of the open-label titration period to the last week of the randomized withdrawal period. The figure is cumulative, such that patients, whose change from baseline is, for example 50%, are also included at every level of improvement below 50%. Patients who did not complete the study were assigned 0% improvement.

Figure 2: Percentage of Patients Achieving Various Levels of Improvement in Pain Intensity - DPN-1

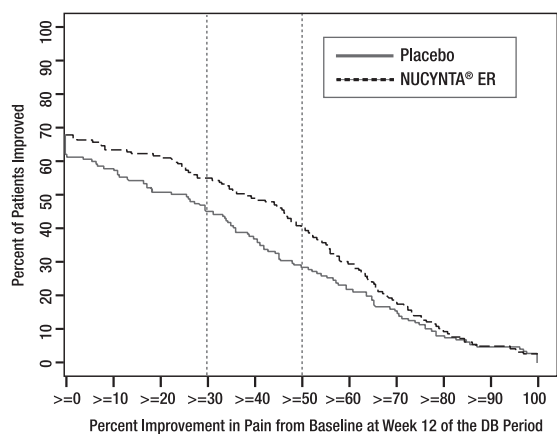


Study DPN-2: A total of 459 patients entered open-label treatment and 320 patients met the criteria for randomization into the double-blind treatment period. The mean age of the randomized population was 59 (range 28 to 83) years; approximately two-thirds of the patients were opioid-naïve (had not taken opioids during the three months prior to the screening visit).

During the titration period, 22% of patients discontinued open-label NUCYNTA ER and 6% of patients were not subsequently randomized because they failed to have at least 1-point improvement in pain intensity. The most common reason for discontinuation in the double-blind treatment period was adverse events in both the placebo group (9%) and the NUCYNTA ER group (14%).

After 12 weeks of treatment, NUCYNTA ER provided a significantly greater reduction in pain intensity from baseline to the end of the 12-week double-blind period compared to placebo. Figure 3 displays the proportion of randomized patients achieving various degrees of improvement in pain intensity from the start of the open-label titration period to the last week of the randomized withdrawal period. The figure is cumulative, such that patients, whose change from baseline is, for example 50%, are also included at every level of improvement below 50%. Patients who did not complete the study were assigned 0% improvement.

Figure 3: Percentage of Patients Achieving Various Levels of Improvement in Pain Intensity-DPN-2



16 HOW SUPPLIED/STORAGE AND HANDLING

NUCYNTA ER tablets are available in the following strengths and packages:

50 mg extended-release tablets are white oblong-shaped with a black print “OMJ 50” on one side and are available in bottles of 60 with child-resistant closure (NDC 69865-240-02) and unit dose blister packs of 100 (10 blister strips of 10 tablets each), for hospital use only (NDC 69865-240-01).

100 mg extended-release tablets are light-blue oblong-shaped with a black print “OMJ 100” on one side and are available in bottles of 60 with child-resistant closure (NDC 69865-245-02) and unit dose blister packs of 100 (10 blister strips of 10 tablets each), for hospital use only (NDC 69865-245-01).

150 mg extended-release tablets are blue-green oblong-shaped with a black print “OMJ 150” on one side and are available in bottles of 60 with child-resistant closure (NDC 69865-250-02) and unit dose blister packs of 100 (10 blister strips of 10 tablets each), for hospital use only (NDC 69865-250-01).

200 mg extended-release tablets are blue oblong-shaped with a depression in the middle running lengthwise on each side and with a black print “OMJ 200” on one side, and are available in bottles of 60 with child-resistant closure (NDC 69865-260-02) and unit dose blister packs of 100 (10 blister strips of 10 tablets each), for hospital use only (NDC 69865-260-01).

250 mg extended-release tablets are dark blue oblong-shaped with a depression in the middle running lengthwise on each side and with a white print “OMJ 250” on one side, and are available in bottles of 60 with child-resistant closure (NDC 69865-265-01) and unit dose blister packs of 100 (10 blister strips of 10 tablets each), for hospital use only (NDC 69865-265-02).

Storage and Handling

Store up to 20°C - 25°C (68°F - 77°F); excursions permitted to 15° C - 30°C (59° F - 86°F) [see USP Controlled Room Temperature].

Protect from moisture.

17 PATIENT COUNSELING INFORMATION

Advise the patient to read the FDA-approved patient labeling (Medication Guide).

Addiction, Abuse, and Misuse

Inform patients that the use of NUCYNTA ER, even when taken as recommended, can result in addiction, abuse, and misuse, which can lead to overdose or death [see *Warnings and Precautions* (5.1)]. Instruct patients not to share NUCYNTA ER with others and to take steps to protect NUCYNTA ER from theft or misuse.

Life-threatening Respiratory Depression

Inform patients of the risk of life-threatening respiratory depression, including information that the risk is greatest when starting NUCYNTA ER or when the dosage is increased, and that it can occur even at recommended dosages [see *Warnings and Precautions* (5.2)]. Advise patients how to recognize respiratory depression and to seek medical attention if breathing difficulties develop.

Accidental Ingestion

Inform patients that accidental ingestion, especially by children, may result in respiratory depression or death [see *Warnings and Precautions* (5.2)]. Instruct patients to take steps to store NUCYNTA ER securely and to dispose of unused NUCYNTA ER by flushing the tablets down the toilet.

Interactions with Benzodiazepines and other CNS Depressants

Inform patients and caregivers that potentially fatal additive effects may occur if NUCYNTA ER is used with benzodiazepines or other CNS depressants, including and not to use these concomitantly unless supervised by a health care provider [see *Warnings and Precautions* (5.4), *Drug Interactions* (7)].

Serotonin Syndrome

Inform patients that opioids could cause a rare but potentially life-threatening condition resulting from concomitant administration of serotonergic drugs. Warn patients of the symptoms of serotonin syndrome and to seek medical attention right away if symptoms develop. Instruct patients to inform their healthcare providers if they are taking, or plan to take serotonergic medications [see *Warnings and Precautions* (5.6), *Drug Interactions* (7)].

MAOI Interaction

Inform patients not to take NUCYNTA ER while using any drugs that inhibit monoamine oxidase. Patients should not start MAOIs while taking NUCYNTA ER [see *Warnings and Precautions* (5.6)].

Adrenal Insufficiency

Inform patients that opioids could cause adrenal insufficiency, a potentially life-threatening condition. Adrenal insufficiency may present with non-specific symptoms and signs such as nausea, vomiting, anorexia, fatigue, weakness, dizziness, and low blood pressure. Advise patients to seek medical attention if they experience a constellation of these symptoms [see *Warnings and Precautions* (5.7)].

Seizures

Inform patients that NUCYNTA ER could cause seizures if they are at risk for seizures or have epilepsy. Patients should be advised to stop taking NUCYNTA ER if they have

a seizure while taking NUCYNTA ER and call their healthcare provider right away [see *Warnings and Precautions (5.11)*].

Important Administration Instructions

Instruct patients how to properly take NUCYNTA ER, including the following:

- Using NUCYNTA ER exactly as prescribed to reduce the risk of life-threatening adverse reactions (e.g., respiratory depression) [see *Dosage and Administration (2)*]
- Swallowing NUCYNTA ER tablets whole [see *Dosage and Administration (2.1)*]
- To take each tablet with enough water to ensure complete swallowing immediately after placing in mouth [see *Dosage and Administration (2.1)*]
- Not cutting, crushing, chewing, or dissolving the tablets [see *Dosage and Administration (2.1)*]
- Not discontinuing NUCYNTA ER without first discussing the need for a tapering regimen with the prescriber [see *Dosage and Administration (2.5)*]

Hypotension

Inform patients that NUCYNTA ER may cause orthostatic hypotension and syncope. Instruct patients how to recognize symptoms of low blood pressure and how to reduce the risk of serious consequences should hypotension occur (e.g., sit or lie down, carefully rise from a sitting or lying position) [see *Warnings and Precautions (5.8)*].

Anaphylaxis

Inform patients that anaphylaxis has been reported with ingredients contained in NUCYNTA ER. Advise patients how to recognize such a reaction and when to seek medical attention [see *Contraindications (4)*, *Adverse Reactions (6.2)*].

Pregnancy

Neonatal Opioid Withdrawal Syndrome

Inform female patients of reproductive potential that prolonged use of NUCYNTA ER during pregnancy can result in neonatal opioid withdrawal syndrome, which may be life-threatening if not recognized and treated [see *Warnings and Precautions (5.3)*, *Use in Specific Populations (8.1)*].

Embryo-Fetal Toxicity

Advise female patients that NUCYNTA ER can cause fetal harm and to inform the prescriber if they are pregnant or plan to become pregnant [see *Use in Specific Populations (8.1)*].

Lactation

Advise patients that breastfeeding is not recommended during treatment with NUCYNTA ER [see *Use in Specific Populations (8.2)*].

Infertility

Inform patients that chronic use of opioids may cause reduced fertility. It is not known whether these effects on fertility are reversible [see *Use in Specific Populations (8.3)*].

Driving or Operating Heavy Machinery

Inform patients that NUCYNTA ER may impair the ability to perform potentially hazardous activities such as driving a car or operating heavy machinery. Advise patients not to perform such tasks until they know how they will react to the medication.

Constipation

Advise patients of the potential for severe constipation, including management instructions and when to seek medical attention.

Disposal of Unused NUCYNTA ER

Advise patients to flush the unused tablets down the toilet when NUCYNTA ER is no longer needed.

Distributed by: Collegium Pharmaceutical, Inc., Canton, MA 02021



U.S. Patent Nos. 6071970, 7994364, 8075872, 8114383, 8309060, 8420056, 8536130, and RE39593.

COL201

Revised: January 2018

Medication Guide

NUCYNTA® ER (new-SINN-tah E-R) (tapentadol) extended-release oral tablets, CII

NUCYNTA ER is:

- A strong prescription pain medicine that contains an opioid (narcotic) that is used to manage pain severe enough to require daily around-the-clock, long-term treatment with an opioid, when other pain treatments such as non-opioid pain medicines or immediate-release opioid medicines do not treat your pain well enough or you cannot tolerate them.
- Also used to manage pain from damaged nerves (neuropathic pain) that happens with diabetes and is severe enough to require daily around-the-clock, long-term treatment with an opioid, when other pain treatments such as non-opioid pain medicines do not treat your pain well enough or you cannot tolerate them.
- A long-acting (extended-release) opioid pain medicine that can put you at risk for overdose and death. Even if you take your dose correctly as prescribed you are at risk for opioid addiction, abuse, and misuse that can lead to death.
- Not used to treat pain that is not around-the-clock pain.

Important information about NUCYNTA ER:

- **Get emergency help right away if you take too much NUCYNTA ER (overdose).** When you first start taking NUCYNTA ER, when your dose is changed, or if you take too much (overdose), serious or life threatening breathing problems that can lead to death may occur.
- Taking NUCYNTA ER with other opioid medicines, benzodiazepines, alcohol, or other central nervous system depressants (including street drugs) can cause severe drowsiness, decreased awareness, breathing problems, coma, and death.
- Never give anyone your NUCYNTA ER. They could die from taking it. Store NUCYNTA ER away from children and in a safe place to prevent stealing or abuse. Selling or giving away NUCYNTA ER is against the law.

Do not take NUCYNTA ER if you have:

- severe asthma, trouble breathing, or other lung problems.
- a bowel blockage or have narrowing of the stomach or intestines.

Before taking NUCYNTA ER, tell your healthcare provider if you have a history of:

- head injury, seizures
- liver, kidney, thyroid problems
- problems urinating
- pancreas or gallbladder problems
- abuse of street or prescription drugs, alcohol addiction, or mental health problems.

Tell your healthcare provider if you are:

- **pregnant or planning to become pregnant.** Prolonged use of NUCYNTA ER during pregnancy can cause withdrawal symptoms in your newborn baby that could be life-threatening if not recognized and treated.
- **breastfeeding.** Not recommended during treatment with NUCYNTA ER. It may harm your baby.
- taking prescription or over-the-counter medicines, vitamins, or herbal supplements. Taking NUCYNTA ER with certain other medicines can cause serious side effects.

When taking NUCYNTA ER:

- Do not change your dose. Take NUCYNTA ER exactly as prescribed by your healthcare provider. Use the lowest effective dose for the shortest time needed.
- Take your prescribed dose every 12 hours, at the same time every day. Do not take more than your prescribed dose in 24 hours. If you miss a dose, take your next dose at your usual time.
- Swallow NUCYNTA ER whole. Do not cut, break, chew, crush, dissolve, snort, or inject NUCYNTA ER because this may cause you to overdose and die.
- **Call your healthcare provider if the dose you are taking does not control your pain.**
- **Do not stop taking NUCYNTA ER without talking to your healthcare provider.**
- After you stop taking NUCYNTA ER, flush any unused tablets down the toilet.

While taking NUCYNTA ER DO NOT:

- Drive or operate heavy machinery until you know how NUCYNTA ER affects you. NUCYNTA ER can make you sleepy, dizzy, or lightheaded.
- Drink alcohol, or use prescription or over-the-counter medicines containing alcohol. Using products containing alcohol during treatment with NUCYNTA ER may cause you to overdose and die.

The possible side effects of NUCYNTA ER are:

- constipation, nausea, sleepiness, vomiting, tiredness, headache, dizziness, abdominal pain. Call your healthcare provider if you have any of these symptoms and they are severe.

Get emergency medical help if you have:

- trouble breathing, shortness of breath, fast heartbeat, chest pain, swelling of your face, tongue, or throat, extreme drowsiness, light-headedness when changing positions, feeling faint, agitation, high body temperature, trouble walking, stiff muscles, or mental changes such as confusion.
- agitation, hallucinations, coma, feeling overheated, or heavy sweating.

These are not all the possible side effects of NUCYNTA ER. Call your doctor for medical advice about side effects. You may report side effects to FDA at 1-800-FDA-1088. **For more information go to dailymed.nlm.nih.gov**

Distributed by: Collegium Pharmaceutical, Inc., 780 Dedham Street Suite 800, Canton, MA 02021, www.collegiumpharma.com or call 1-866-458-6389

This Medication Guide has been approved by the U.S. Food and Drug Administration
NUCX-012-C.1

Revised: 12/2016
APL-NUCX-0210 Rev. 2